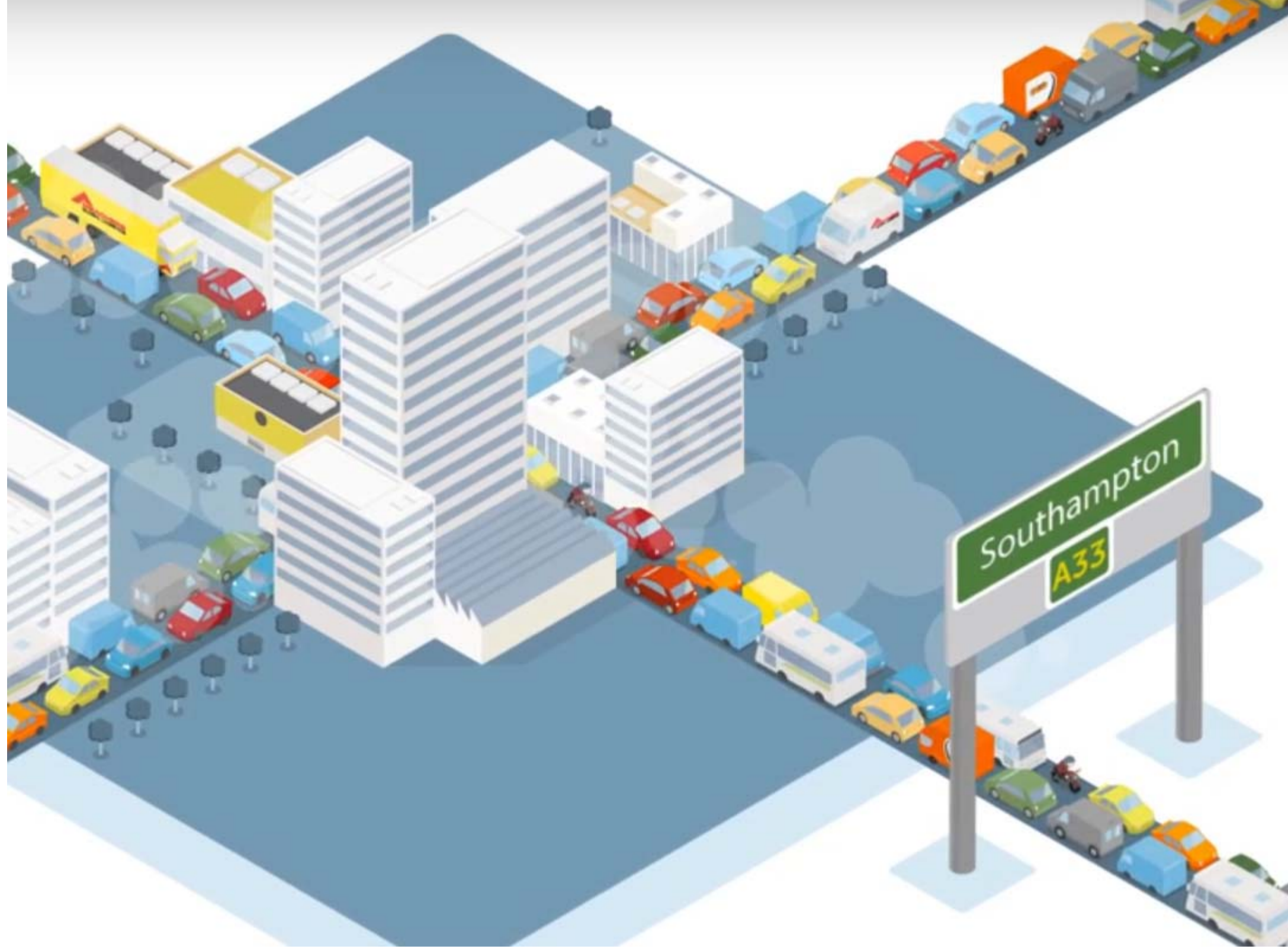


JOINT PROCUREMENT, CONSOLIDATION AND ELECTRIC VEHICLES – SOUTHAMPTON

PROBLEM AND AIM

Improve air quality in city centre and along main access roads.



PROPOSED SOLUTIONS

- **Delivery and Servicing Plans (DSP)** for businesses to better understand purchasing practice and resulting freight impact
- **Joint procurement** between large municipal organisations to realise cost savings and sustainability benefits
- **Consolidation** of deliveries to hospitals, universities and city council via Sustainable Distribution Centre (SDC)
- **Electric vehicles** – city council commence long-term plan to switch vehicle fleet to electric or alternative fuels

IMPLEMENTATION PROCESS – LIVING LAB APPROACH

- Consultation with procurement and supply chain teams at universities and hospitals in Southampton area
- Undertaking DSPs as an incentive to consolidate goods
- Memorandum of understanding signed by participants
- Scoping studies and cost/benefit analyses for use of consolidation centre and electric vehicles
- Uptake of solutions where considered beneficial:
 - Southampton General Hospital use of SDC
 - SCC phased introduction of EVs into in-house vehicle fleet



Southampton's SDC (operated by Meachers Global Logistics)

RESULTS

- **DSP audit of Southampton General Hospital** showed 900 delivery vehicles per week (71% van, 18% lorry); led to small-scale use of SDC and planning for more extensive use
- **Consolidation to university halls of residence** - estimated savings of 2 hours per day for hall reception staff and 35% reduction in delivery visits. Cost (£18/student/year) and concern about urgent items prevented implementation.
- **Electric vehicles** - first six electric vehicles purchased by city council as part of plan to switch at least 20% fleet by 2020



Southampton City Council team and newly acquired EV

CHALLENGES

- Persuading organisations to make logistical changes in favour of sustainability when there may be some costs (e.g. financial or slower delivery)
- Competing priorities and limited funding streams within organisations – resources for logistics issues are scarce
- Staff turnover can result in a lack of continuity in planning

EXPLOITATION POTENTIAL

- Current discussion around use of SDC for consolidation of pharmacy goods and as an off-site hospital pharmacy
- Further development of joint procurement agreements
- Continuing living lab approach and extension of agreement for promoting use of the SDC

CONTACTS

Tom Cherrett (University of Southampton), tjc3@soton.ac.uk

Neil Tuck (SCC), Neil.Tuck@southampton.gov.uk

Gary Whittle (MGL), gwhittle@meachersglobal.com

