



Southampton

A city of opportunity where everyone thrives





1.83M

passengers used Southampton Airport in 2014

370

miles of highway

28

miles of dedicated cycle routes



683

miles of footways

32

miles of public rights of way



53,597

people both live and work in Southampton

Above national average

16.5% journeys to work are on foot



9.3%

of residents travel by bus to work



58.2%

of people drive a car to work



25%

Journeys to work by bike rise by a quarter 2001-2011

41,302

people who live in the city commute out to work

41,891

people commute into the city to work from outside

SOUTHAMPTON TODAY



124

people were Killed or Seriously injured on our roads in 2014

6.2M

JOURNEYS began or ended at Southampton Central station

18.5M

journeys were made on buses, up 4% on the previous year

7.1M

JOURNEYS went through the city's 8 railway stations, 18% more than in 2007/8



70.4%

of households in the city own at least one car/almost a **third** of households in the city **do not own a car**

1.7M

cruise visitors passed through the Port of Southampton in 2013/14

3.5M

ferry passengers travelled through Southampton on Red Funnel to Isle of Wight and across to Hythe in 2014

51.8km²

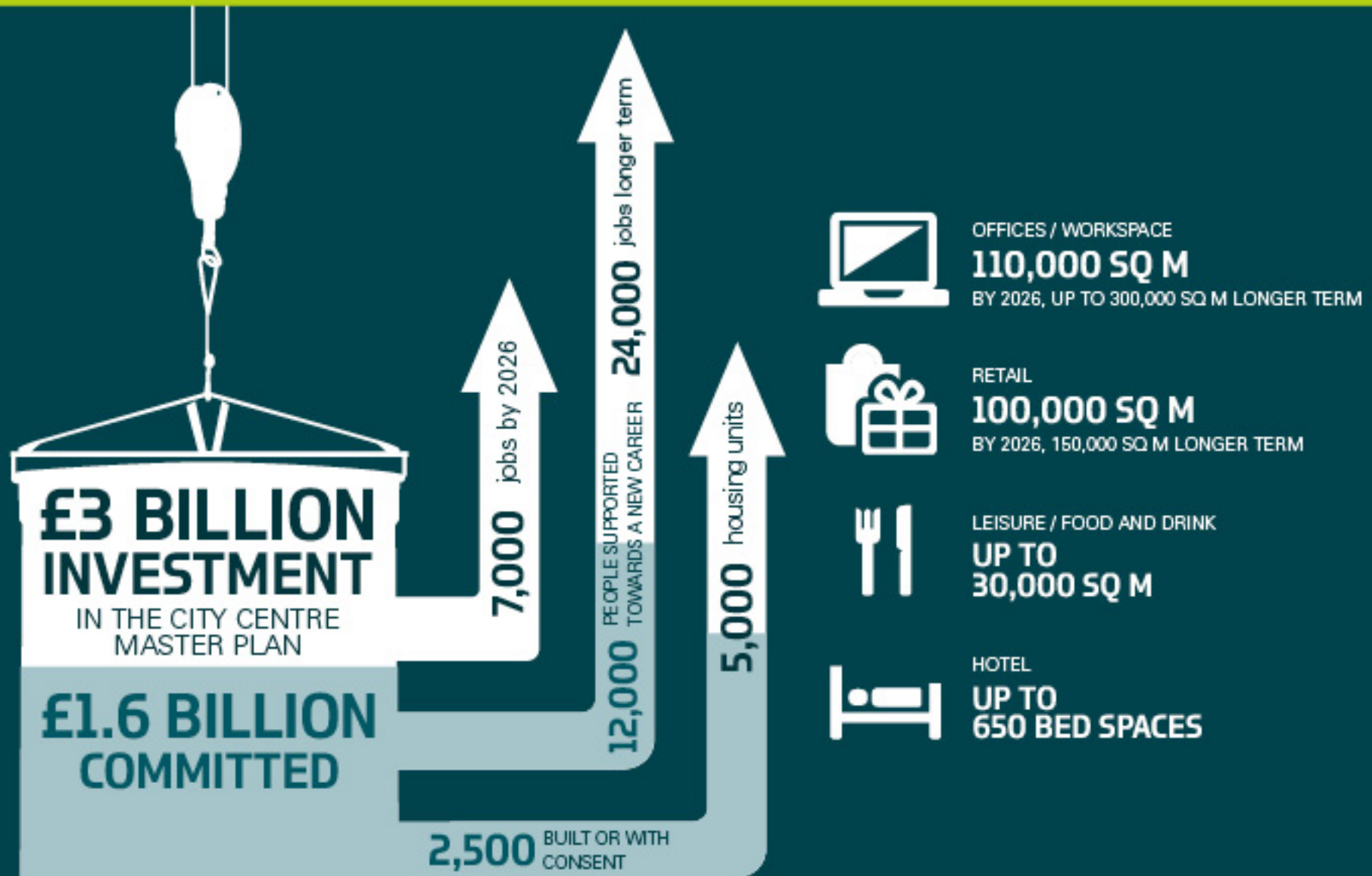
Size of city



245,300

Population of Southampton

BOLD AND AMBITIOUS



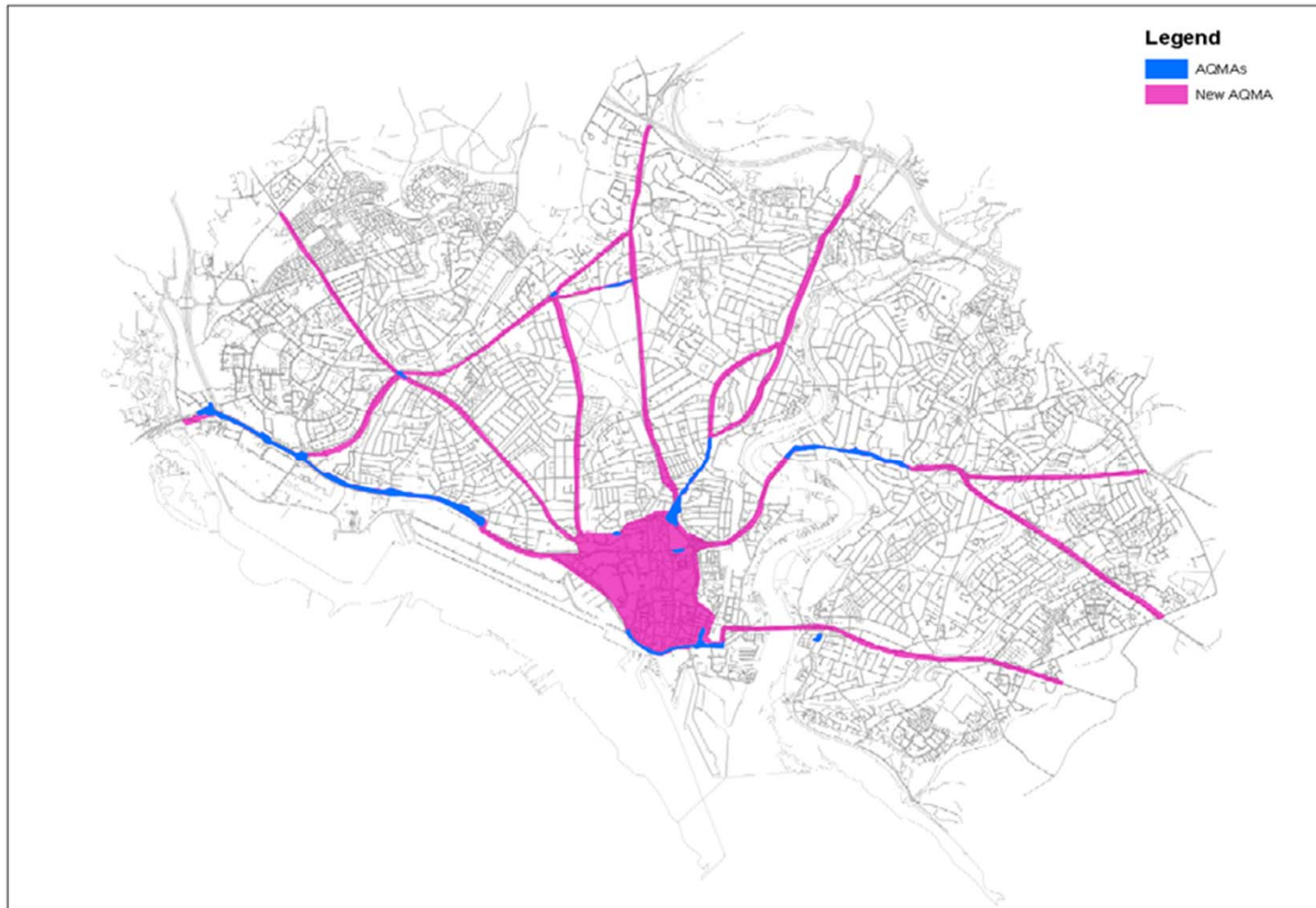
Air Quality Impact

6.2% of deaths in 2010 were attributable to air pollution - 110 deaths

Amongst those aged 25 years = 1,280 life years lost.

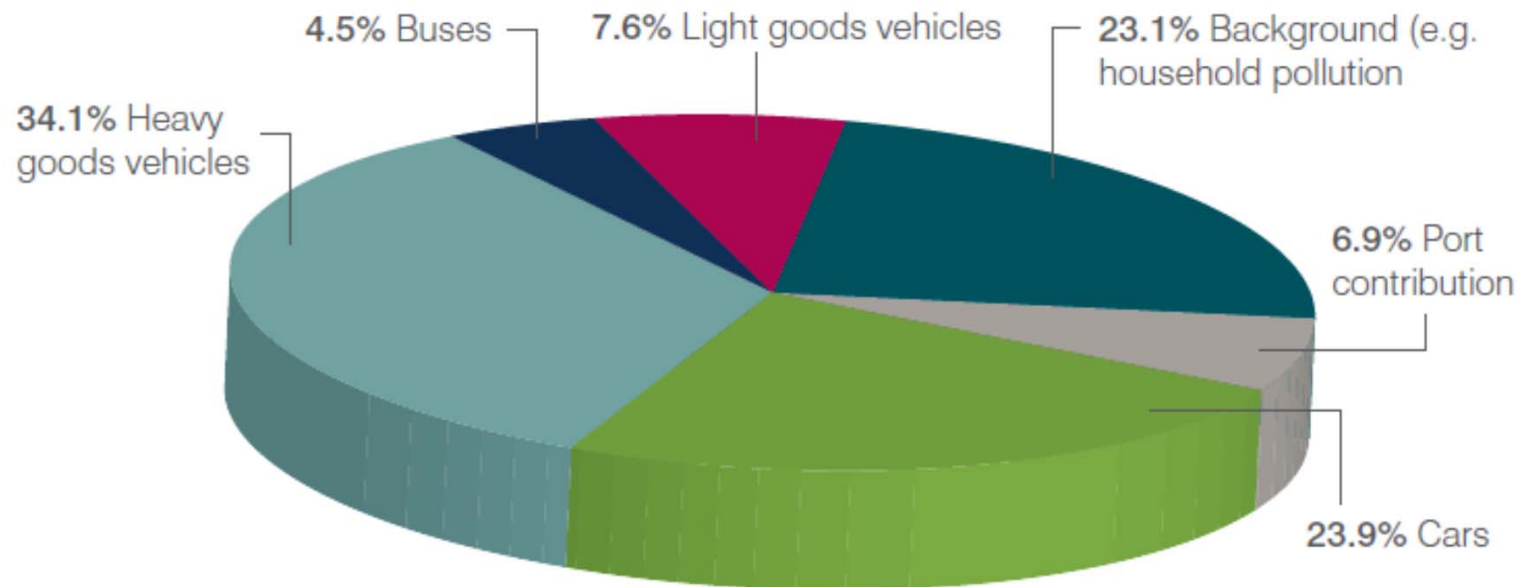
WHO Ambient Air Pollution in Cities - One of the worst cities in the UK to be breaching air pollution safety guidelines - specifically for PM 10

Clean Air Zone (Potential Boundary)



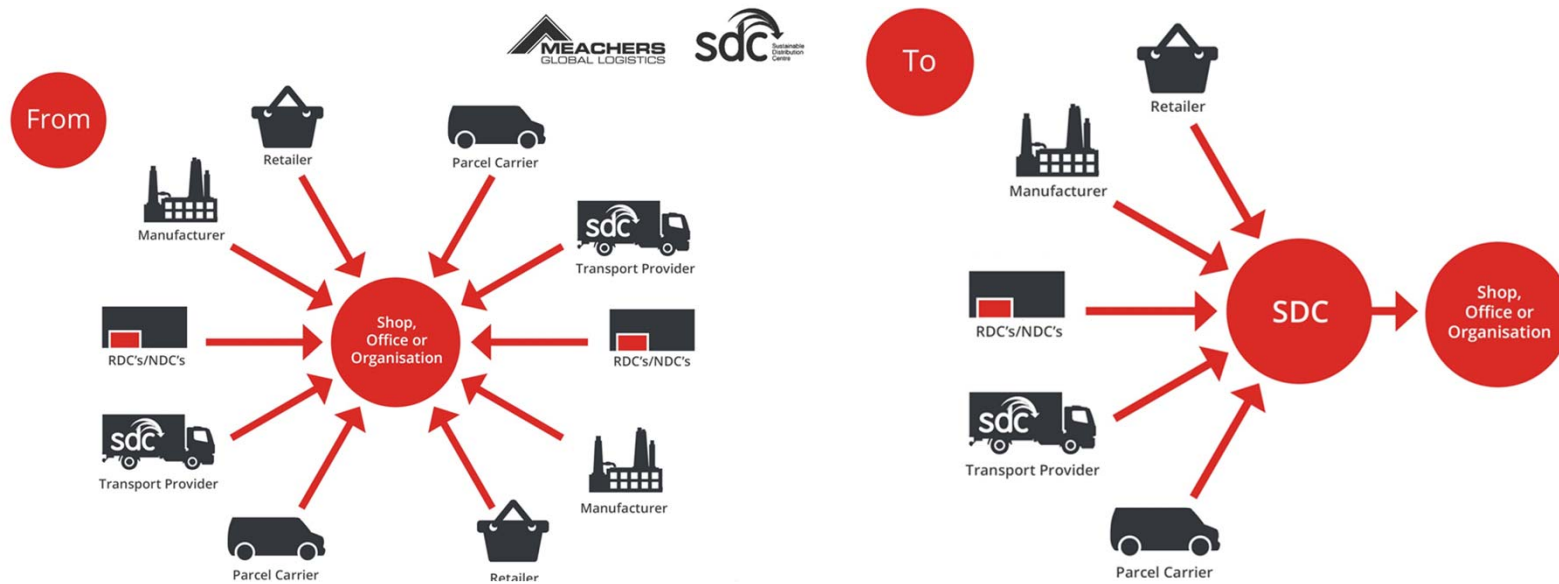
A city of opportunity where everyone thrives

Causes of Air Pollution



Source apportionment (% of modelled nitrogen dioxide) at M271 and A33 junction, Redbridge

Sustainable Distribution Centre (SDC)



A city of opportunity where everyone thrives



An aerial photograph of Southampton harbor and the surrounding city. The harbor is filled with various ships, including a large cruise ship docked at a pier. The city is visible in the background, with a mix of residential and commercial buildings. The water is a deep blue-green color.

Thank you for listening

For more information contact

Neil Tuck

Tel: +44 2380 833 409

Email: neil.tuck@Southampton.gov.uk

A city of opportunity where everyone thrives

