

# Chapelle International « Logistics Hotel »

## Sogaris multimodal Consolidation Center for Paris



Paris May 26, 2016





# SOGARIS : A public-private corporation

## Sogaris a company dedicated to urban logistics

Sogaris is a public-private corporation involved in designing, developing and managing logistical facilities.

Created in 1960, its capital is owned up to 80% by the local governments (*départements*) of Paris and its inner suburbs. Projects in progress include logistical facilities in Paris and its suburbs and in Lyon and Marseille and an European logistics platform in Luxemburg.

When the company was created in 1960, Sogaris' area of business was urban logistics. It is still a major axis of development.

## Key facts about Sogaris

PP corporation : S.A.E.M.L - CA et DG

Created in : 28 July 1960

Turnover 2015 : 46 M€

Warehouses , transit platforms and offices : 545 000 s.q.m

Projects in progress : 145 000 s.q.m

Sites : 9

Building : 51

Corporate clients : 180

Employees : 70



Delivery véhicule Sogaris  
Rungis (1967)



Multimodal Platform  
Rungis (2015)

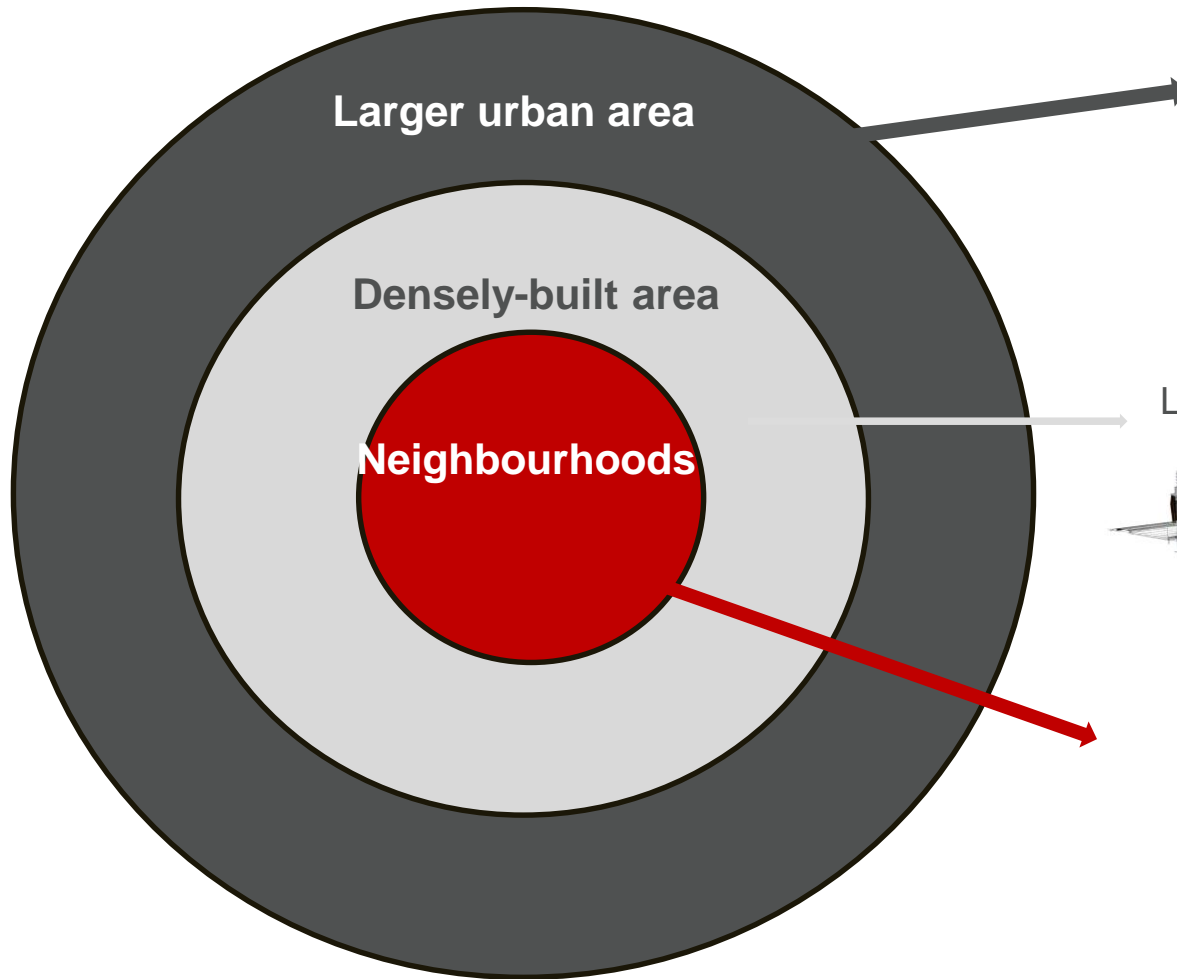


Warehouse (  
Rungis (2015)



Sogaris Logistique  
Rungis (2016)

# Sogaris urban freight strategy



**Level 1**  
Urban Logistics Platform as points of entry



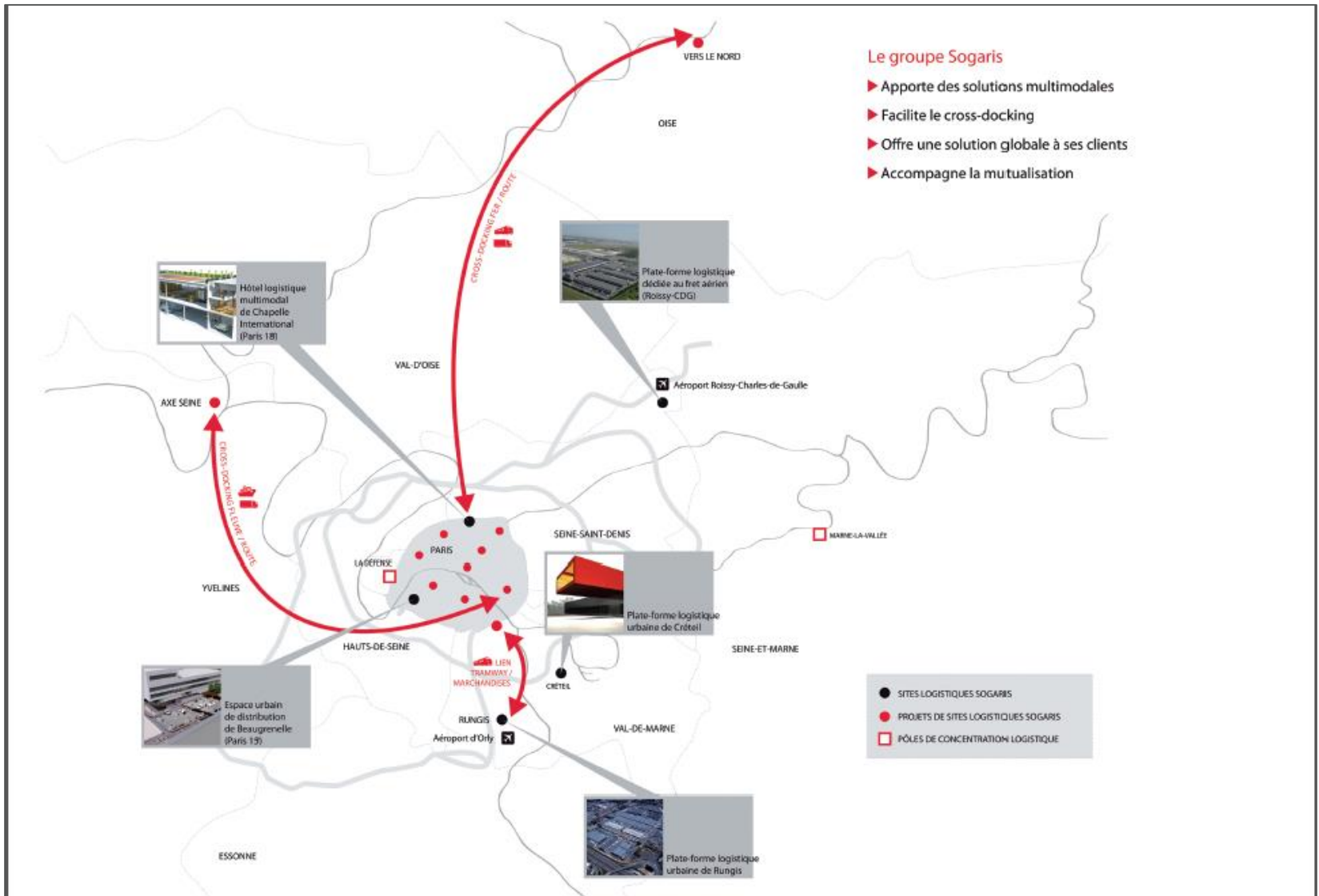
**Level 2**  
Consolidation Centre  
Logistics Hotel – Freight Terminal



**Level 3**  
Urban Delivery Centre  
Final delivery points



# Conclusion - Sogaris scheme for the Paris Metropolitan Area - Grand Paris





## Key facts

Located : 61, rue de la Chapelle in the 18<sup>th</sup> district of Paris

Land : 2,4 hectares

Rail connection : Paris North rail network.

Road connection : Rue de la Chapelle , Boulevard Ney, Boulevard périphérique et A1

Building : 45 000 s.q.m

Size : 390 m of length and 57 m of Width

## Dates

Call for projects City of Paris and Espaces Ferroviaires  
Aménagement : November 2010

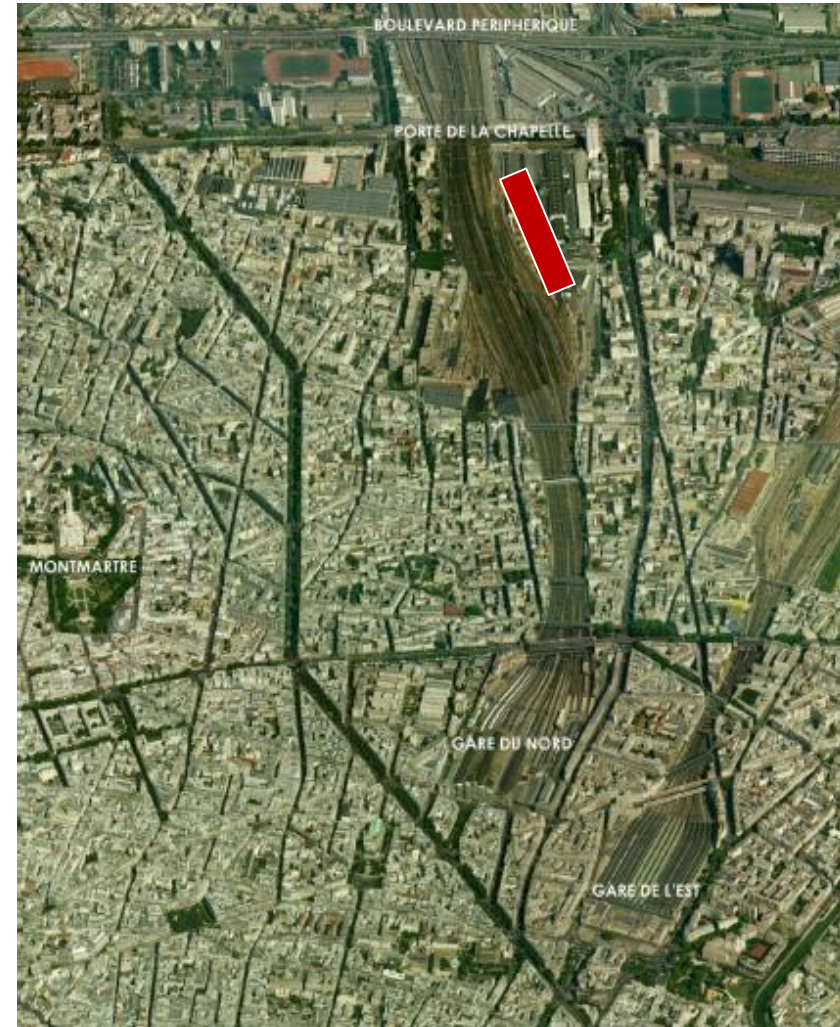
Designation of Sogaris project : July 2011

Building permit – December 2012 – June 2014

Land purchase : September 2015

Beginning of construction : September 2015

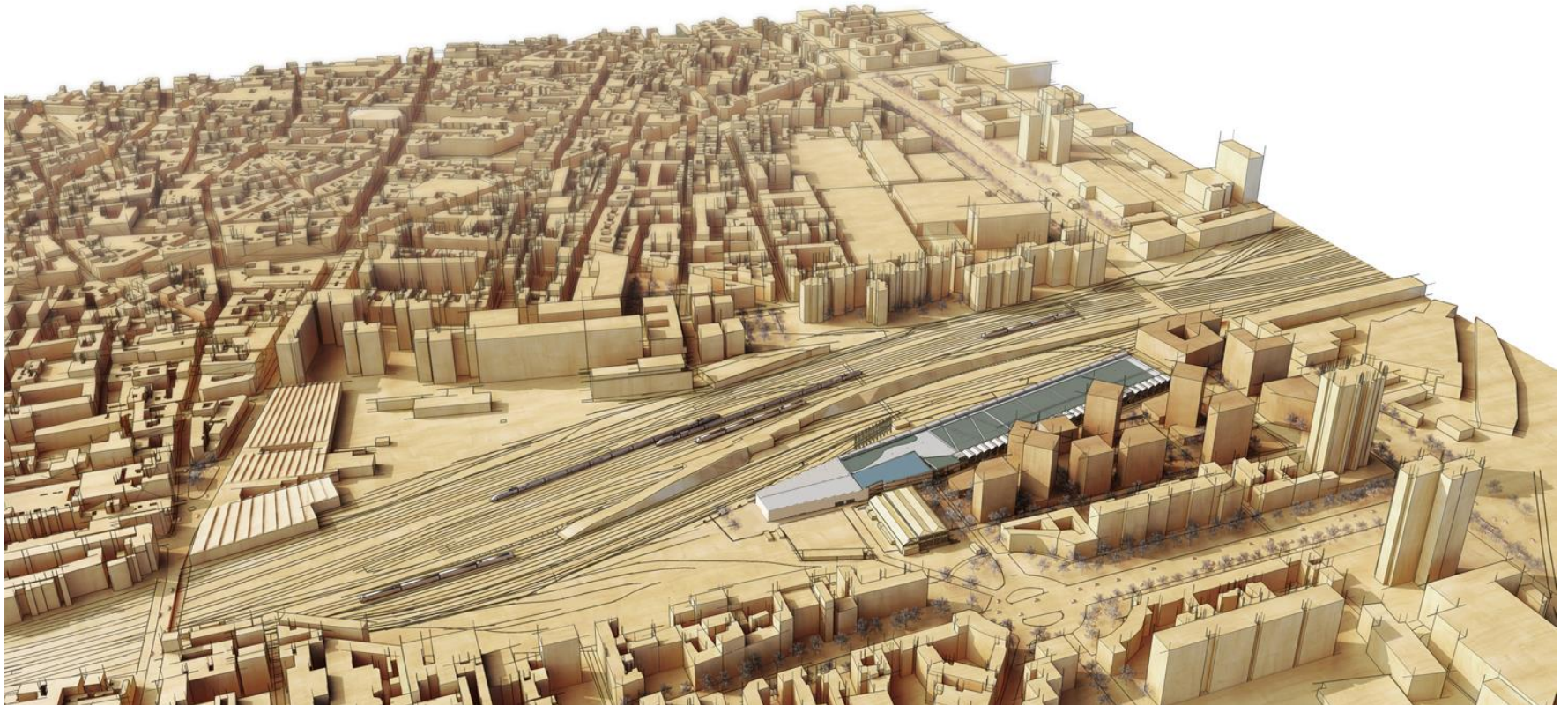
Delivery and commissioning : September 2017





**SOGARIS**

**Exceptional location at the 61 rue de la Chapelle  
in the 18th district of Paris - Chapelle International**

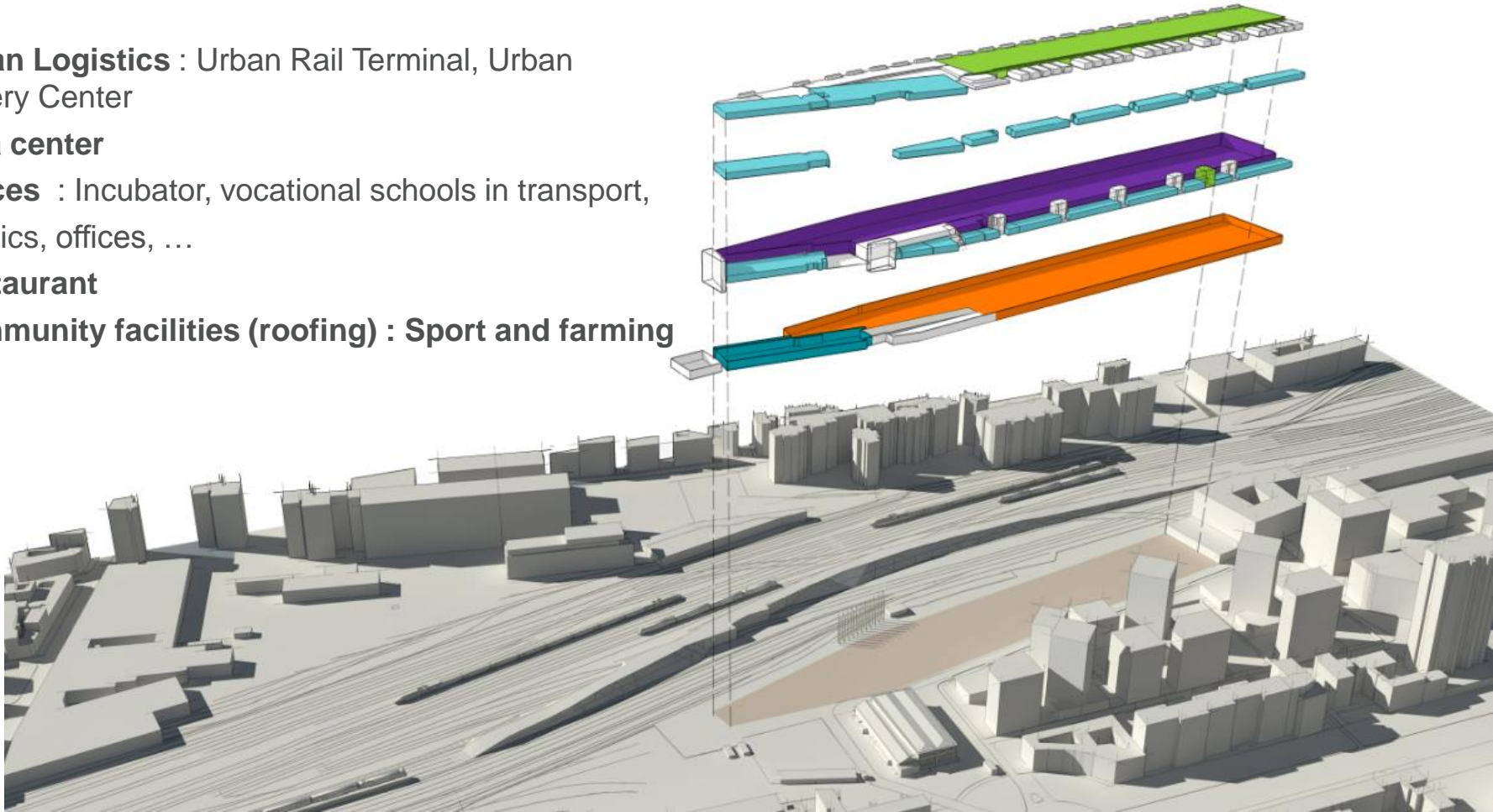




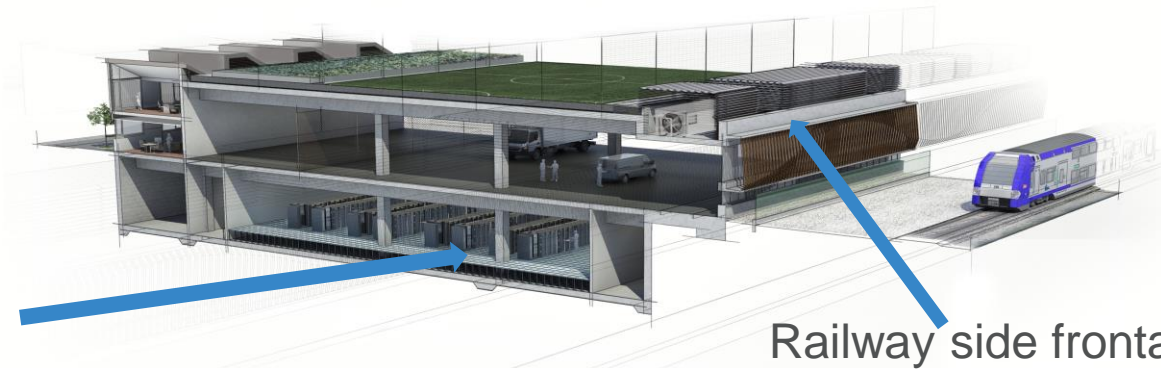
# Inserting urban Views of the front offices and the landscaped roof



- . **Urban Logistics** : Urban Rail Terminal, Urban Delivery Center
- . **Data center**
- . **Offices** : Incubator, vocational schools in transport, Logistics, offices, ...
- . **Restaurant**
- . **Community facilities (roofing)** : Sport and farming







Data Center

Railway side frontage

Urban Railway Terminal

Roofing with sport grounds and farming



**Cash & Carry  
Parking area**

**Frontage side neighborhood  
Office building – Block n°3  
surface tertiary on  
the ground floor**



## Ground Floor – Urban Railway Terminal

**XPO**Logistics



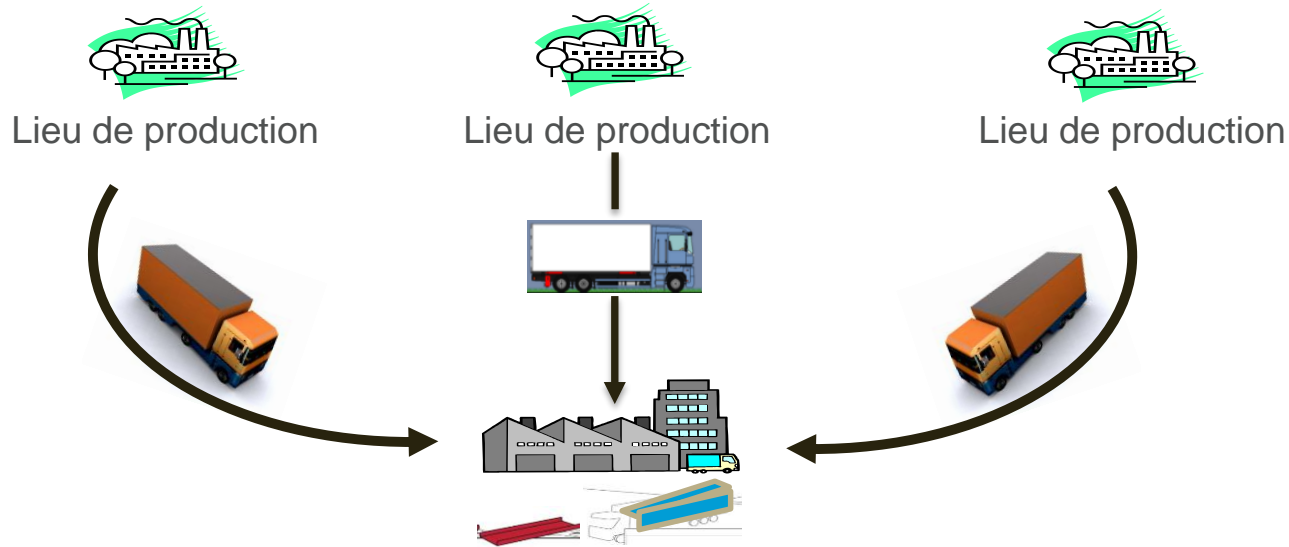
### Size of the Paris Chapelle International urban railway terminal :

- Area : 15 512 s.q.m
- Located on the ground floor
- 390 m long
- Branched north rail network

### Urban rail shuttles for freight

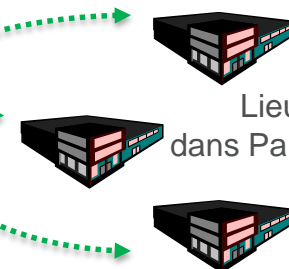
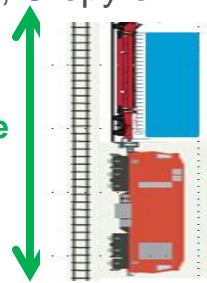
- . 2 urban rail shuttles short line per day from Dourges (200 kms) and Bruyères-sur-Oise (80 kms) located in the North of the Ile-de-France region
- . Each shuttle has a capacity of 60 swap bodies
- . Only the swap bodies will be handled in the Paris Chapelle International terminal  
**Urban swap bodies** : 6,70 m long and capacity of 15 pallets
- . Handling swap is done using three cranes
- . Urban swap bodies will be put on urban trucks for final delivery in Parisian stores
- . Urban rail shuttle will be operated in cooperation with EURORAIL and XPO Logistics





Plateforme Logistique équipée d'un Terminal Ferroviaire « Amont »  
 (ex : Bruyères sur Oise, Crépy en Valois, Dourges Delta 3...)

80 à 230 kms distance ferroviaire



Lieux de livraison dans Paris et 1<sup>ère</sup> couronne

Paris Chapelle International  
 T.F.U. pour transfert modal Fer / Route

## Demain

- Massification
- Neutralisation
- Intermodalité
- Horaires flexibles
- Bilan CO2 très amélioré





# Cash & Carry area - Chapelle International 15 346 s.q.m.

Retail space and operating : 10,457 s.q.m (Basement of the building)

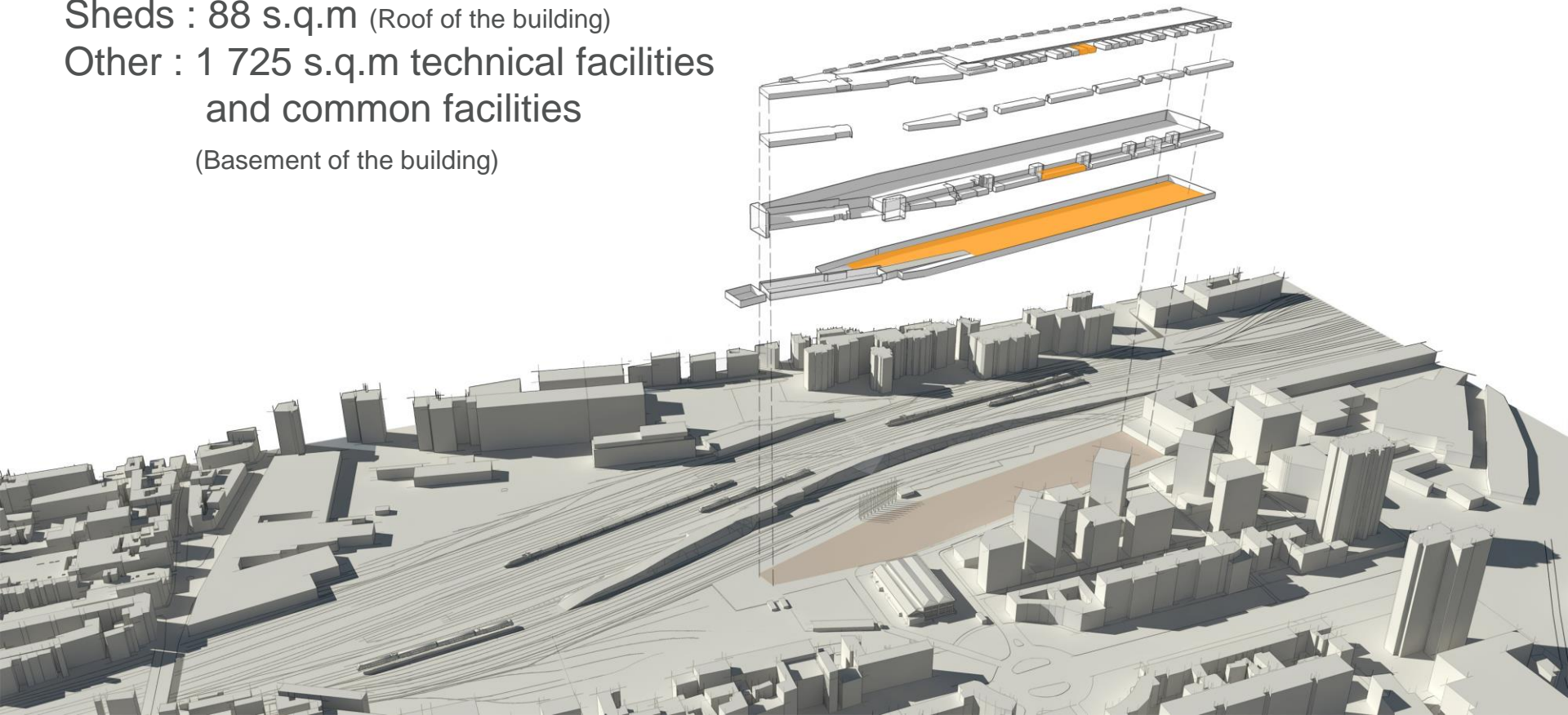
Parking : 2755 s.q.m (Basement of the building)

Office : 321 s.q.m (Ground floor of the building)

Sheds : 88 s.q.m (Roof of the building)

Other : 1 725 s.q.m technical facilities  
and common facilities

(Basement of the building)

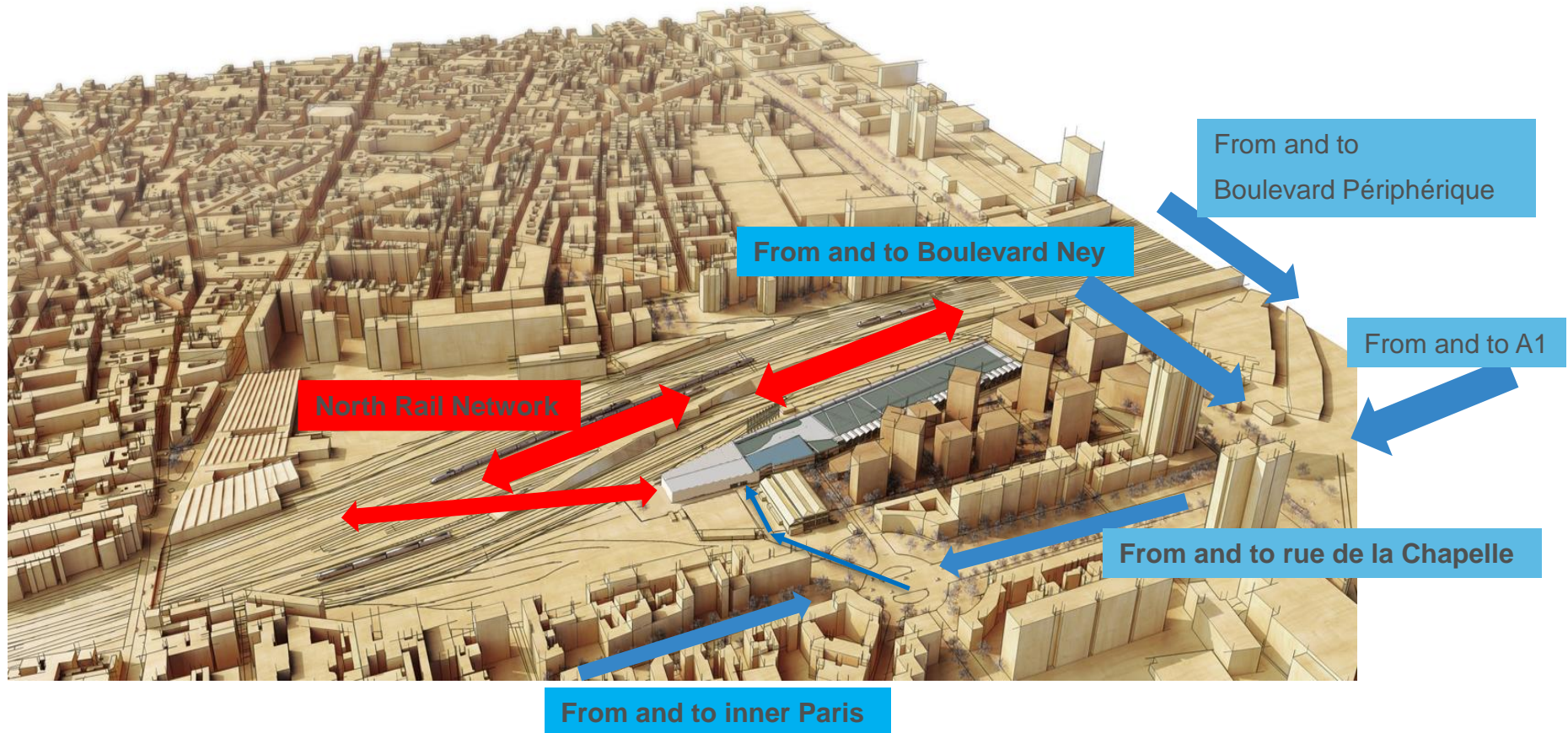




**Chapelle International truck access**



**Chapelle International train access**







Access Chapelle International pedestrians and publics transports



Access Chapelle International cars and vans



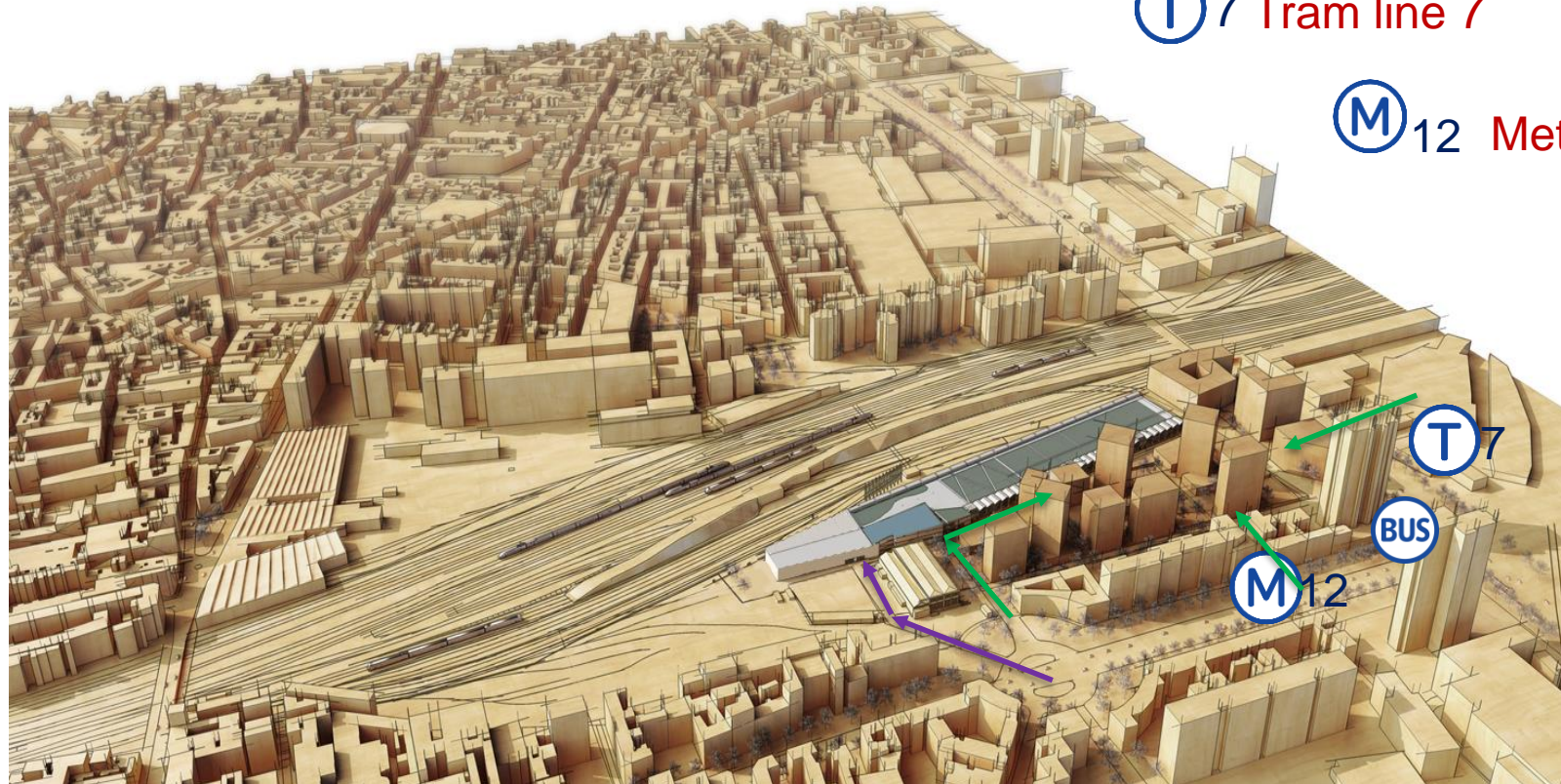
Bus lines 65, PC3, 153, 166, 252, 302, 350 and night bus Noctilien N43 et N143



Tram line 7



Metro line 12



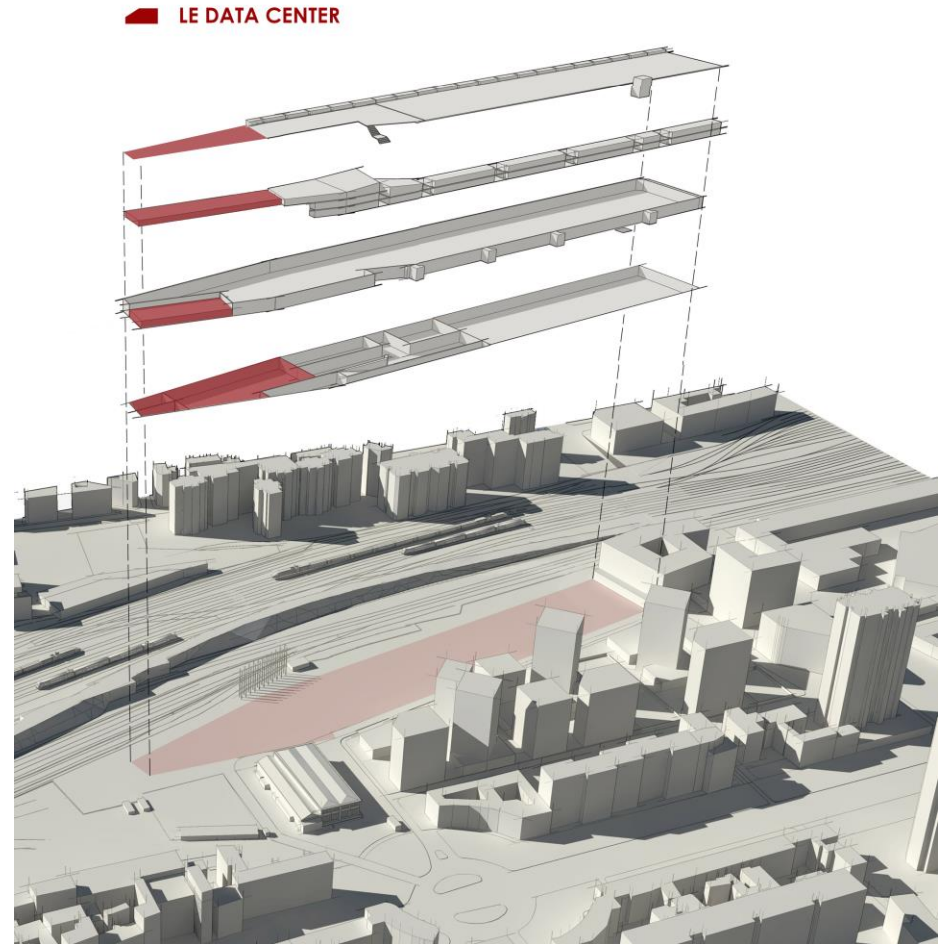
# Chapelle International Data Center

Located in the southern part of the building

Surface area 2 000 s.q.m including (750 s.q.m IT halls)

Electric power estimated : 2,5 MW

The heat of the data center will be used to heat the greenhouse for urban agriculture



# Offices





# Inserting the logistical hotel in the new Chapelle International quarter

- . Offices area : 10 000 s.q.m
- . Three location :
  - Neighbourhood heart
  - Central building
  - Southern tip



- . Incubator LMUD « Logistique et Mobilité urbaine durable » (Paris&Co)
- . Vocational schools in transport
- . Logistics Offices and METRO offices
- ...

# Restaurant and other offices

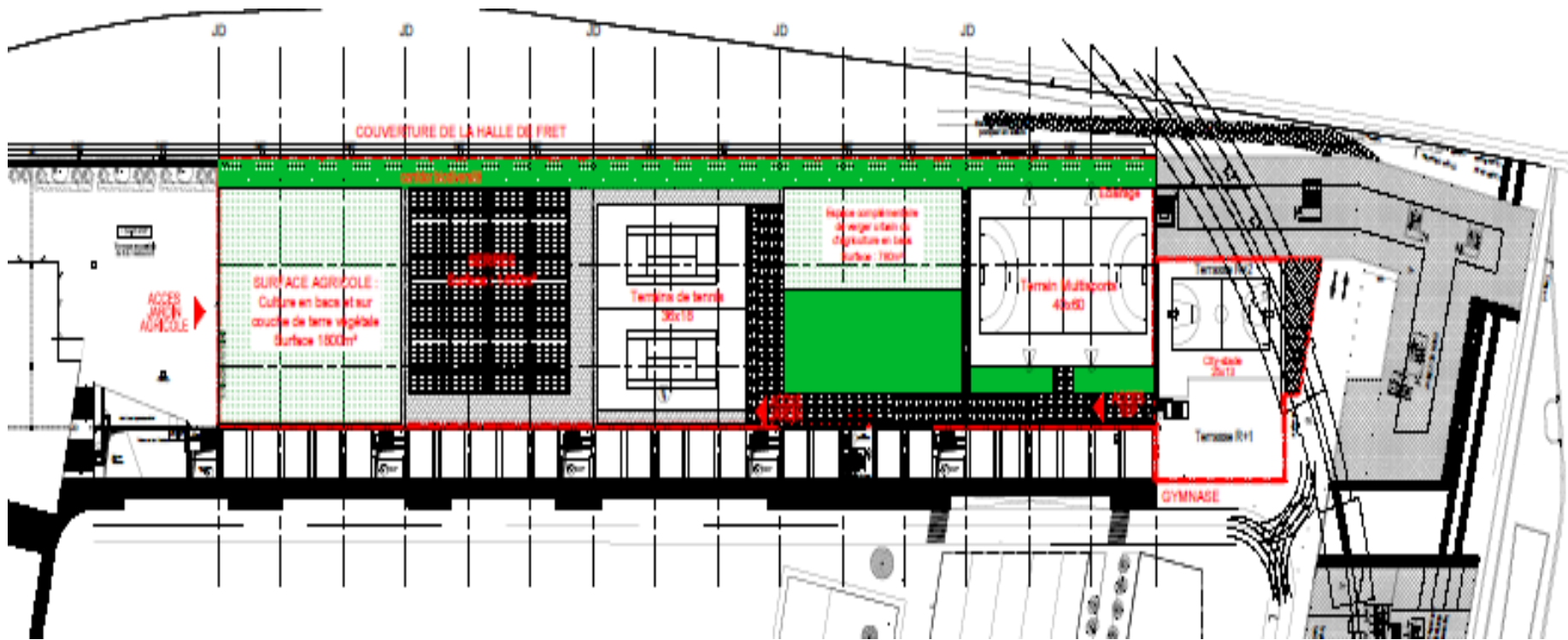


View from the rue de la Chapelle



# City of Paris community facilities

Surface area : 10 000 s.q.m - North top roof - Sports grounds and urban farming

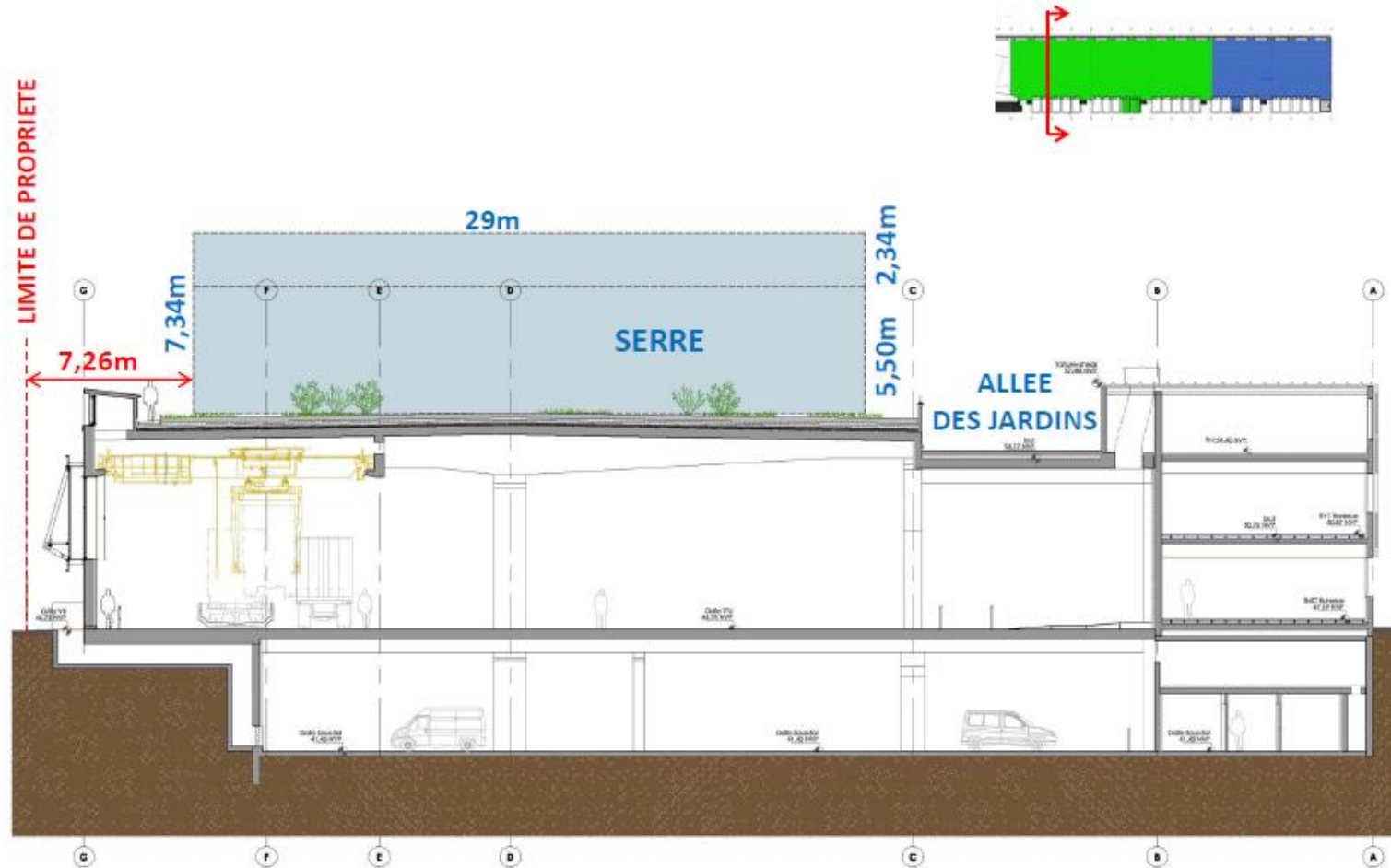




# The greenhouse urban farm

## Sectional view

SCHEMA COUPE TRANSVERSALE SUR SERRE



# Organization of work construction of the logistics hotel

## **Designation of construction companies** : july 17, 2015

Macro-lot 01 Roads and green spaces : COLAS IDFN

Macro-lot 02 Structure and concrete : GCC - Earthwork : BIOGENIE

Macro-lot 03 Roofing and waterproofing and façade : FACE IDF

Macro-lot 04 Technical networks : CEGELEC

Macro-lot 05 Interior layout and finishes : NBA

Macro-lot 06 Railway works : ETF

## **Land purchase** : September 4, 2015

## **Signing the contract with construction companies** : Septembre 7, 2015

## **Beginning of construction** : September 7, 2015

Laying of the first construction bungalows from September 8, 2015

## **Technical reception of the building** : June 30, 2017

## **Delivery and commissioning** : September 2017

## Key figures of construction

The construction site is organized into 5 zones and with 6 cranes

100 000m<sup>3</sup> of land was removed partly in filling quarries, class 2 for polluted soil with heavy metals and inert land.

23 000m<sup>3</sup> of concrete

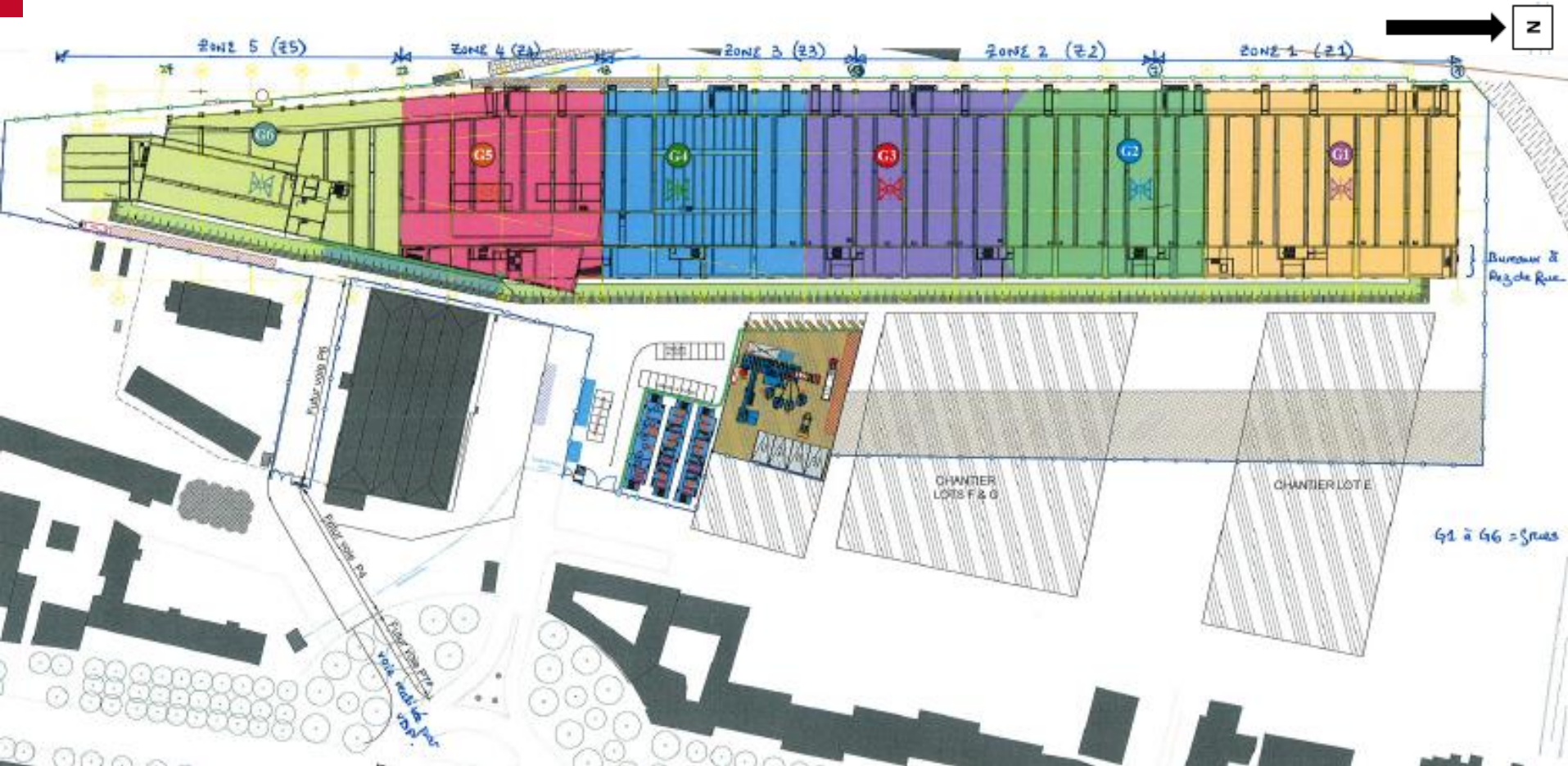
1700 tons of steel

113 tons of structural steel (Roofing)

392 stakes



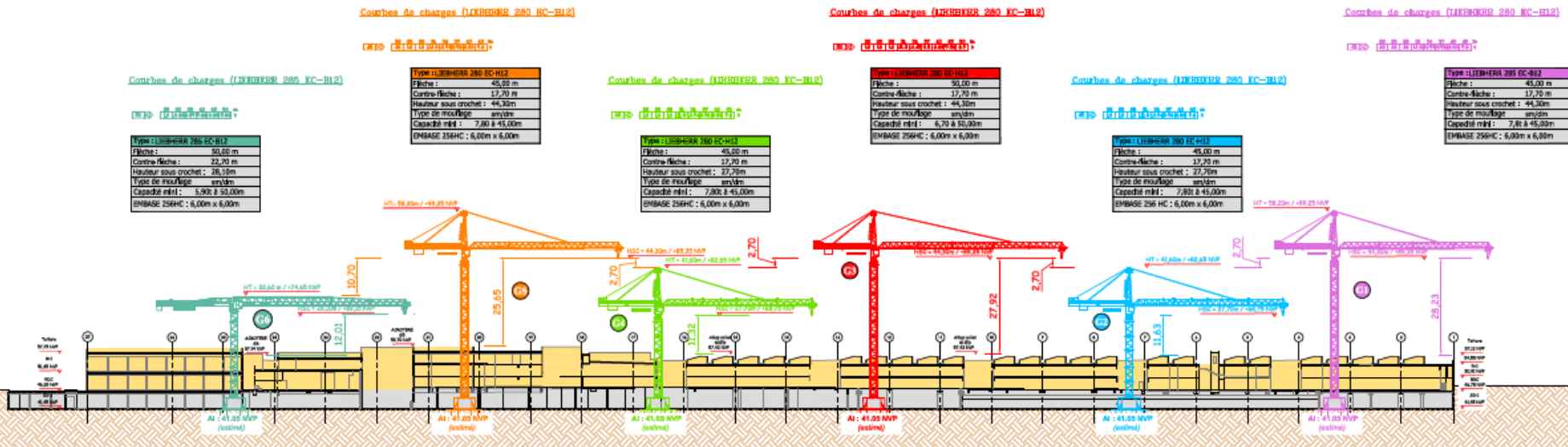
# 5 zones construction



PLAN DE REPERAGE DES ZONES

## Principe de fonctionnement des 6 grues

VUE EN COUPE 1 / 500a







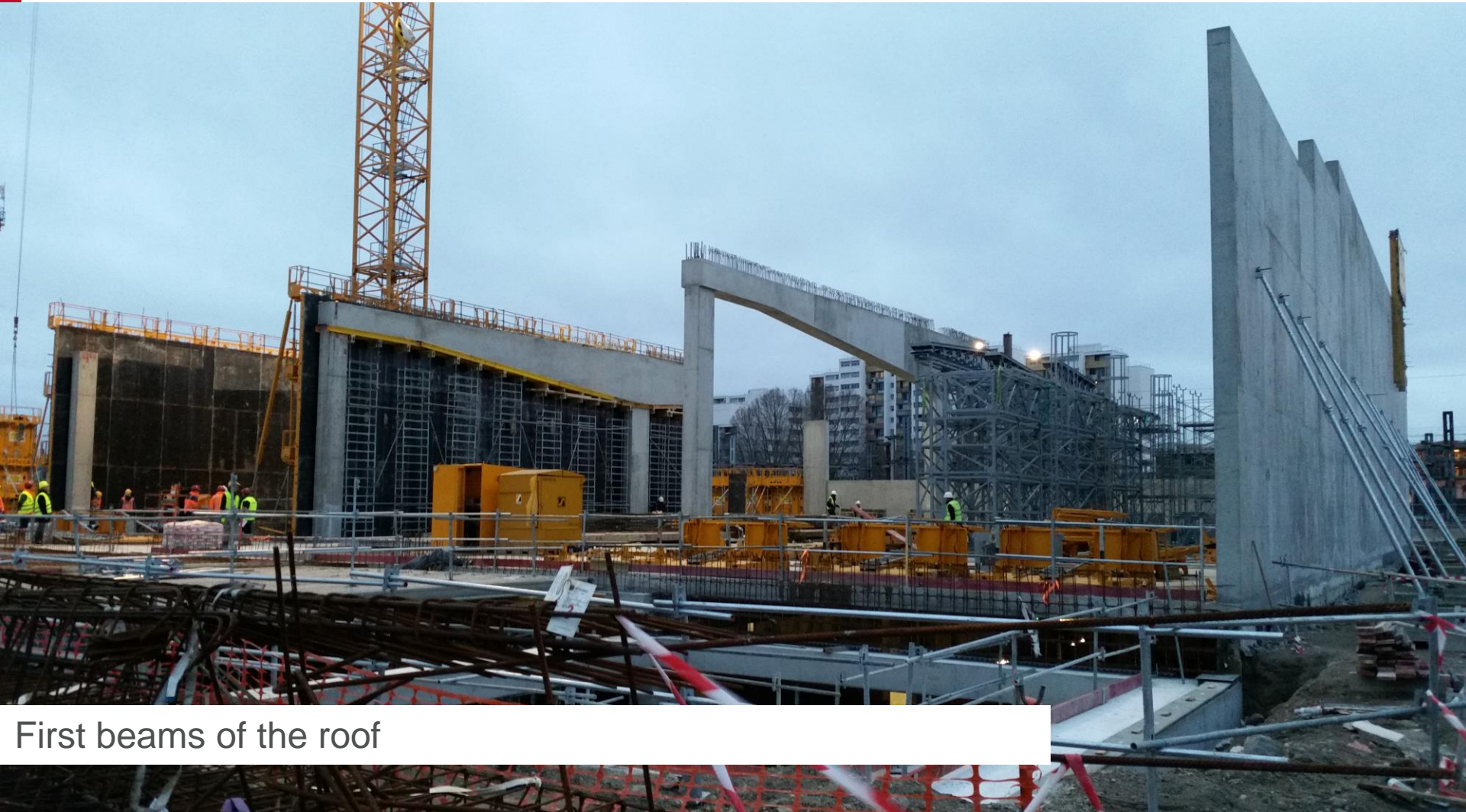
1<sup>st</sup> 100,000 m3 of earth excavation





North-South - Alignment of 6 cranes





First beams of the roof

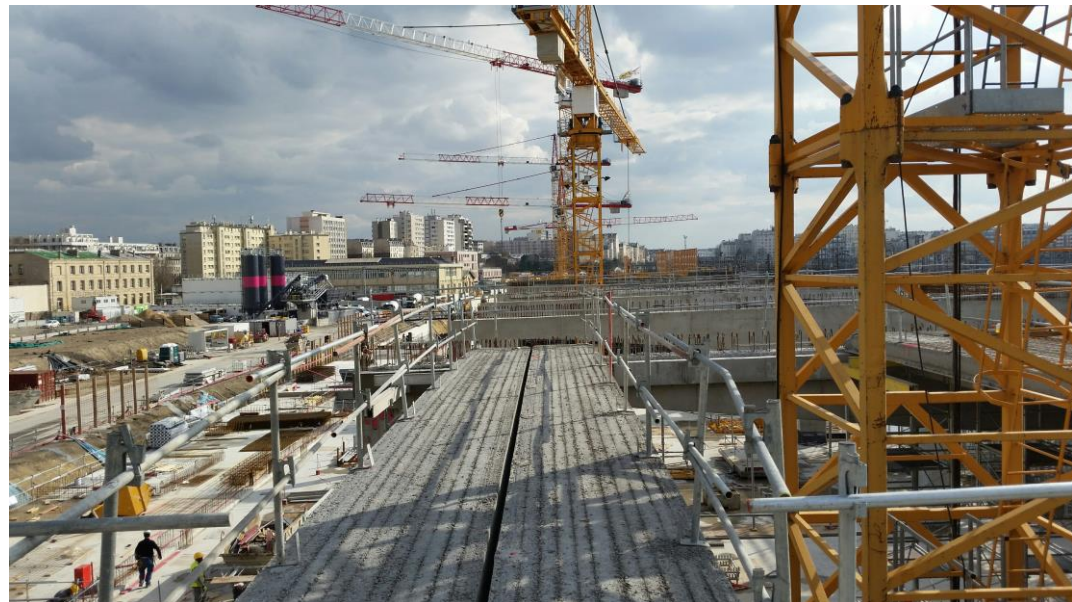


# Construction of the ramp and the turning area of the basement – March 2016





# Roof construction northern zone 1 – March 2016









# Basement zone 3 – March 2016

