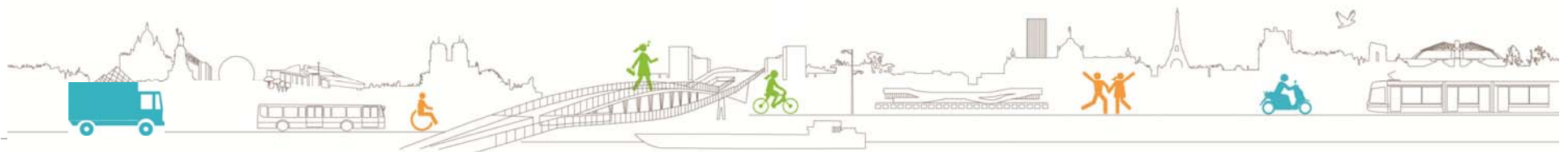


Sustainable urban logistics

City of Paris



A large numbers of players

- State
- Region
- County Council
- Chamber of Commerce, Guild Chamber

- Economic dynamism and important sector for jobs
- Region-wide approach
- Environmentally friendly logistics
- Urban planning
- Transport and deliveries
- Home deliveries / Persons of reduced mobility
- City hall logistics (roadworks and building sites, waste)

- Transport Undertakings
- Logisticians
- Shippers
- Firms
- Urban planners and promoters
- Infrastructure managers and Railway and Waterway Managers

⇒ Charter in 2006 and 2013

2006 : commitment charter

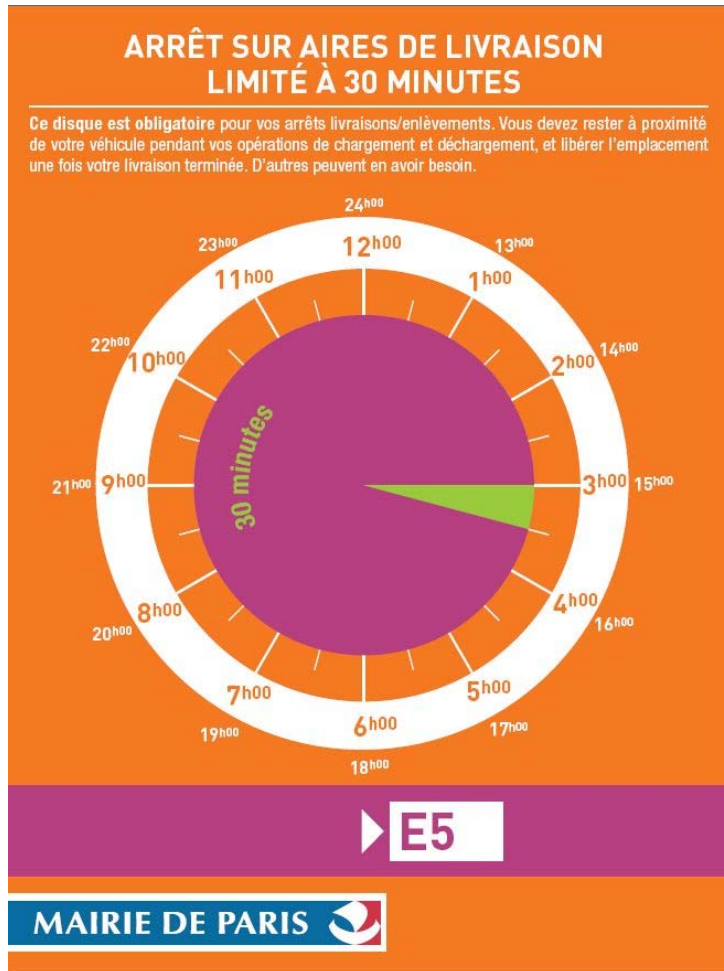
2013 : operational charter

First Charter, June 2006

Consultation initiated in 2002 and signature in June 2006 by 47 partners



Delivery zones



Urban distribution centre

Example : Chronopost Concorde



2nd charter, September 2013

- More concrete and operational
- Based on project Sheets
- Relying on greater involvement on the part of the signatories
- An operational monitoring committee for the charter projects that will bring together all partners, once a year

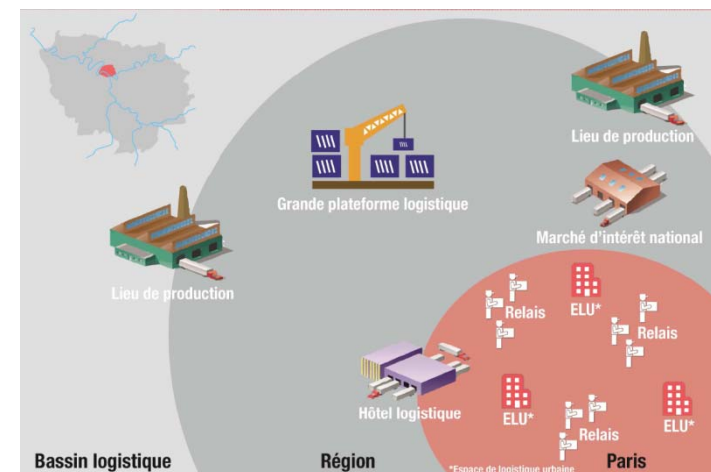
80 signatures :

- 4 Institutions
- 3 Chambers of skilled occupations, trade and industry
- 5 Infrastructures managers and Railway and Waterway managers
- 9 Associations or Federations of Transport Undertaking
- 7 Associations or Federations of shippers
- 38 Firms
- 7 Partners Associations and Research Organisations
- 7 Other stakeholders

16 project sheets

- Zero diesel logistic (electric, NGV, ...)
- Logistic in master plan
- E-business and home deliveries
- Water based logistic & Railway Freight
- Modernisation of delivery zones, regulation
- Certification for low-noise night deliveries with Certibruit :
- Introduction of a system of parking space reservation for removals
- Cargotram

PROJECT 1		Outline policy for urban logistics in Paris	
Area:	LOGISTICS FACILITIES	Project leader:	City of Paris (DVD)
Strategic goal:	To respond to the need for logistics zones and changes in flows in the next 10-15 years	Partners (Sept 2013):	City (DU, DVD), APUR, Idf Region, State (DRIEA), IAU, Conseils généraux, GATMARIF, FNTR, SOGARIS, SNCF, RFF, Ports de Paris, VNF, CCIP, CMAP, ADEME, La Poste, Chronopost, OTRE, SNTL, AFTRI, CGI, Delanthy, Martin Brower, Carrefour, Géodis, Cret-Log, IFSTTAR, LET, CERTU, Afilog, RATP, The Green Link, Franprix, TLF, Point P, Cluster LUD CCI 92, STEF
Project monitoring		Project parameters	
Result:	Identification and meeting the need for logistics zones in Paris based on freight flows 10-15 years from now	Cost:	150,000 € DVD 2 x 15,000 € SOGARIS
Monitoring indicator:	Project progress	Difficulties:	
Impact indicator:		Importance:	Protecting urban logistics activities in the context of the revision of the Local Master Plan, while improving their compatibility with urban activities as a whole.
Goals			
<p>Freight transport in urban areas brings together a large number of different players and products, acting within a wide variety of organisations, each with their specific attitudes and type of vehicle, in a context with an increasing number of home deliveries.</p> <p>In order to reduce the harmful impacts of this activity, particularly in the "last mile", it is necessary to optimise the delivery rounds that are made from urban distribution centres. This raises the issue of the sizing and positioning of these centres, which must be evaluated in order to ensure that logistics operations are preserved in policy documents such as the Regional Master Plan, the Urban Travel Plan, or the Local Master Plan.</p> <p>In order to possess objective data on requirements in the next 10 to 15 years and consider ways of organising logistics in a more sustainable manner, the City of Paris wishes to develop an outline policy for urban logistics in Paris.</p>			
Project description			
<ul style="list-style-type: none"> ✓ To mobilise all stakeholders and available knowledge to analyze how freight transport in dense areas is currently organised. The aim is, working with professionals, academics and researchers, to identify the principal trends that may affect urban deliveries in the next 10 to 15 years. ✓ Referring to this detailed information, to propose a Metropolitan logistical architecture and an outline policy for logistics in the Paris area based on: <ul style="list-style-type: none"> - A dense network of logistics sites, ranging from large centres to small facilities permitting the development of local logistics services. - Transport systems: road vehicles, trains, trams, boats, swap bodies, and maximising the use of carbon-free vehicles. - Demand-responsive organisation: the issue of governance, systems that encourage pooling, the use of digital transport technology, and local services (as proposed by ALUD). 			
Schedule			
<ol style="list-style-type: none"> 2013: data collection and general framework policy for logistics 2014: further study, in particular involving sector-based analysis 			



An innovative logistics

MAIRIE DE PARIS



PARIS
& CO

EXPERIMENTATION



In 2015, the City of Paris and Paris&Co appeal for innovative logistics projects

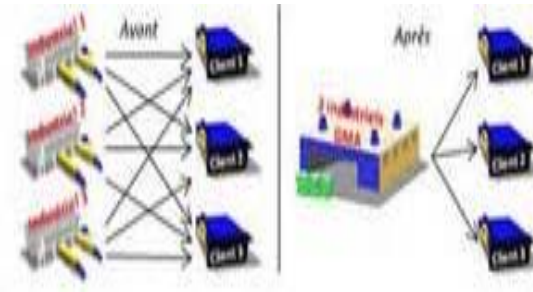
-22 candidates selected

Goals are :

-To support the 22 companies selected for an experimental test in real conditions over a period of one year maximum

-To bring out, through a partnership approach, reproducible processes or projects improving the logistics of the last km and to reduce any negative impacts

Innovative projects



Nos capteurs intelligents connectés



(photos disponibles sans réserve de confidentialité)



New service for professionals

September 2016 : Shared electric commercial vehicles : « car-sharing »



Fight plan against air pollution

RESTRICTIONS

HGV : (>3.5T) 24/24, 7/7
Since Sept 2015 : need to comply to minimum euro3
Only euro 5 and 6 in 2019

LGV (<3.5T) from 8am to 8pm on working days
July 2016, need to comply to minimum euro2
Only Euro 5 & 6 in 2019



SUPPORT FOR PROFESSIONNALS

- From 3 000 to 9 000 euros to help to buy an electric vehicle or gas vehicle - 15 % of the price
- Free parking for electric gas vehicles
- Charging stations network
- Implementation of new compressor stations ...

Thank you for your attention



DIRECTION DE LA VOIRIE ET DES DÉPLACEMENTS

TOUTE L'INFO
au 3975* et
sur **PARIS.FR**

*Prix d'un appel local à partir d'un poste fixe sauf tarif propre à votre opérateur