



# CITYLAB

## *City Logistics in Living Laboratories*

Jardar Andersen

Institute of Transport Economics,  
Norway





## What we do

*Emission free city logistics in urban centres by 2030*

- improve **basic knowledge and understanding** about the impacts of freight distribution and service trips in urban areas;
- test and implement **7 innovative solutions**
  - **reduce negative impacts** of freight vehicle
  - **enhance business profitability**
- provide a platform for **replicating and rolling out** the solutions





## How we do it: Living labs

- Private-public-research collaboration: “For change in urban freight transport it is necessary to align the stakeholders, their objectives, their abilities to act, and their perception of the problems to be tackled”
- Successful upscaling of innovation requires supporting environment on city or neighbourhood level





toi

# CITYLAB partners

toi



STEEN & STROM  
WE ENRICH MODERN SHOPPING

ROMA TRE  
UNIVERSITÀ DEGLI STUDI



Meware



ROME & YOU

**Posteitaliane**

gnewt cargo  
*love the last mile*



TRANSPORT FOR LONDON



THE PEOPLE NETWORK



UNIVERSITY OF GOTHENBURG



Vrije Universiteit Brussel



BRUSSELS MOBILITY  
BRUSSELS REGIONAL PUBLIC SERVI



P&G



IFSTAR



DLR

**MAIRIE DE PARIS**




**TNO**



postnl

**ROTTERDAM**



UNIVERSITY OF  
**Southampton**



SOUTHAMPTON CITY COUNCIL



MEACHERS  
GLOBAL LOGISTICS





# The implementations

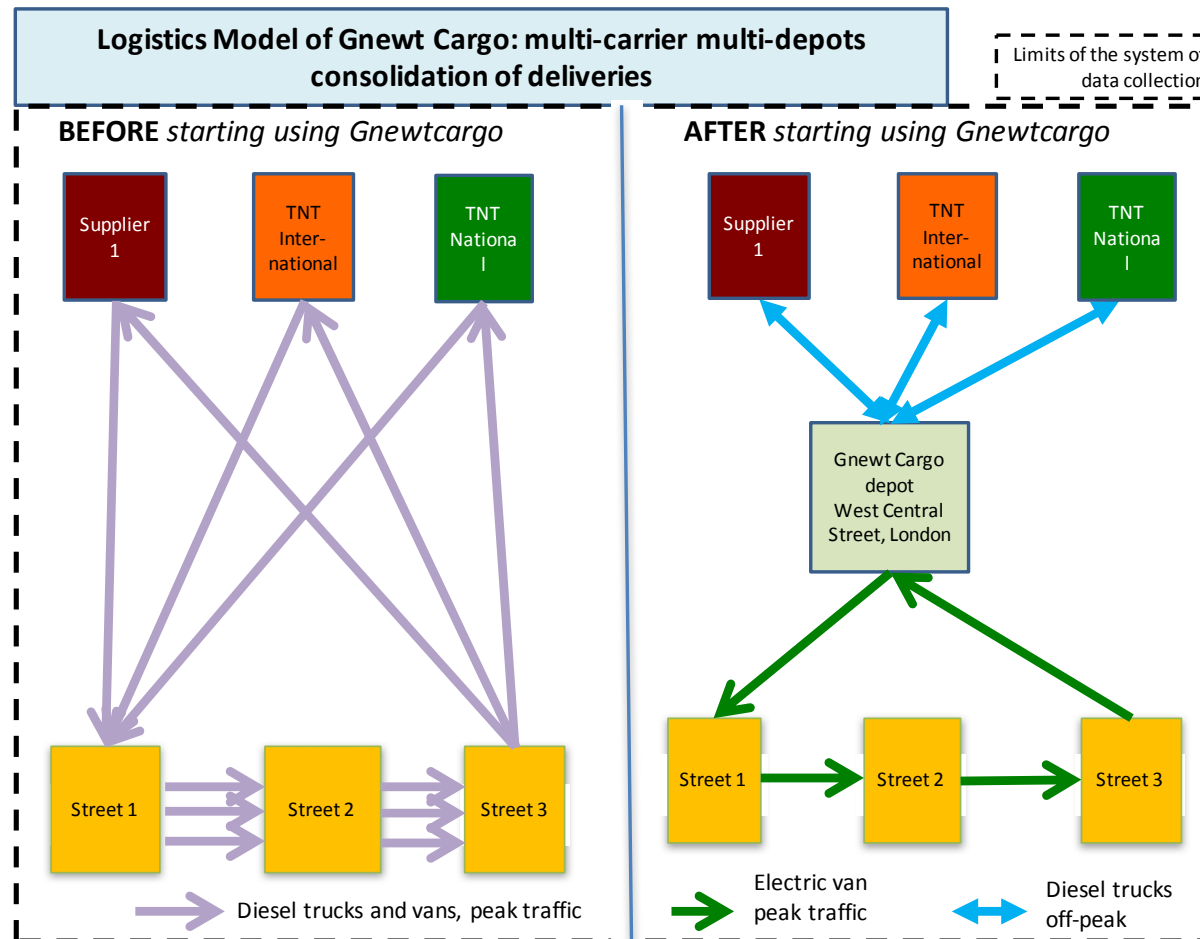
Axes for intervention	Implementation	City	Partner
Highly fragmented last-mile deliveries in city centres	Growth of consolidation and electric vehicle use	London	TNT and Gnewt Cargo
	Floating depot and city centre micro-hubs	Amsterdam	PostNL
	Increasing load factors by utilising spare van capacity	Brussels	Procter & Gamble
Inefficient deliveries to large freight attractors and public administrations	Joint procurement and consolidation	Southampton	Meachers Global Logistics
	Common logistics functions for shopping centres	Oslo	Steen & Strøm
Urban waste, return trips and recycling	Integration of direct and reverse logistics	Rome	Poste Italiane, Meware
Logistics sprawl	Logistic hotels	Paris	SOGARIS





# London – growth of electric vehicles

- Add volumes from TNT domestic business to TNT international delivery business already distributed by Gnewt Cargo



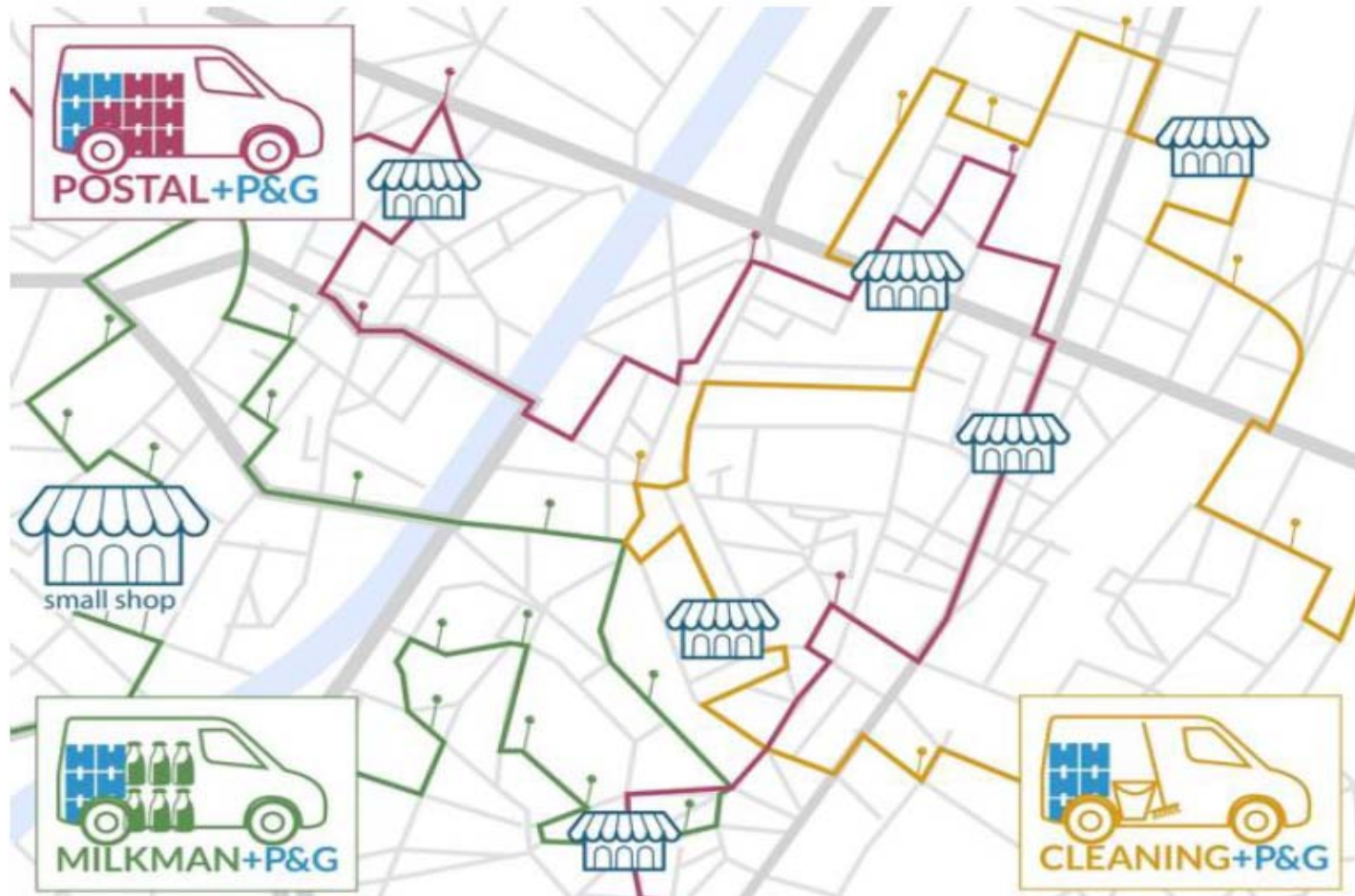


# Amsterdam – micro hubs and floating depot





# Brussels – utilising spare van capacity







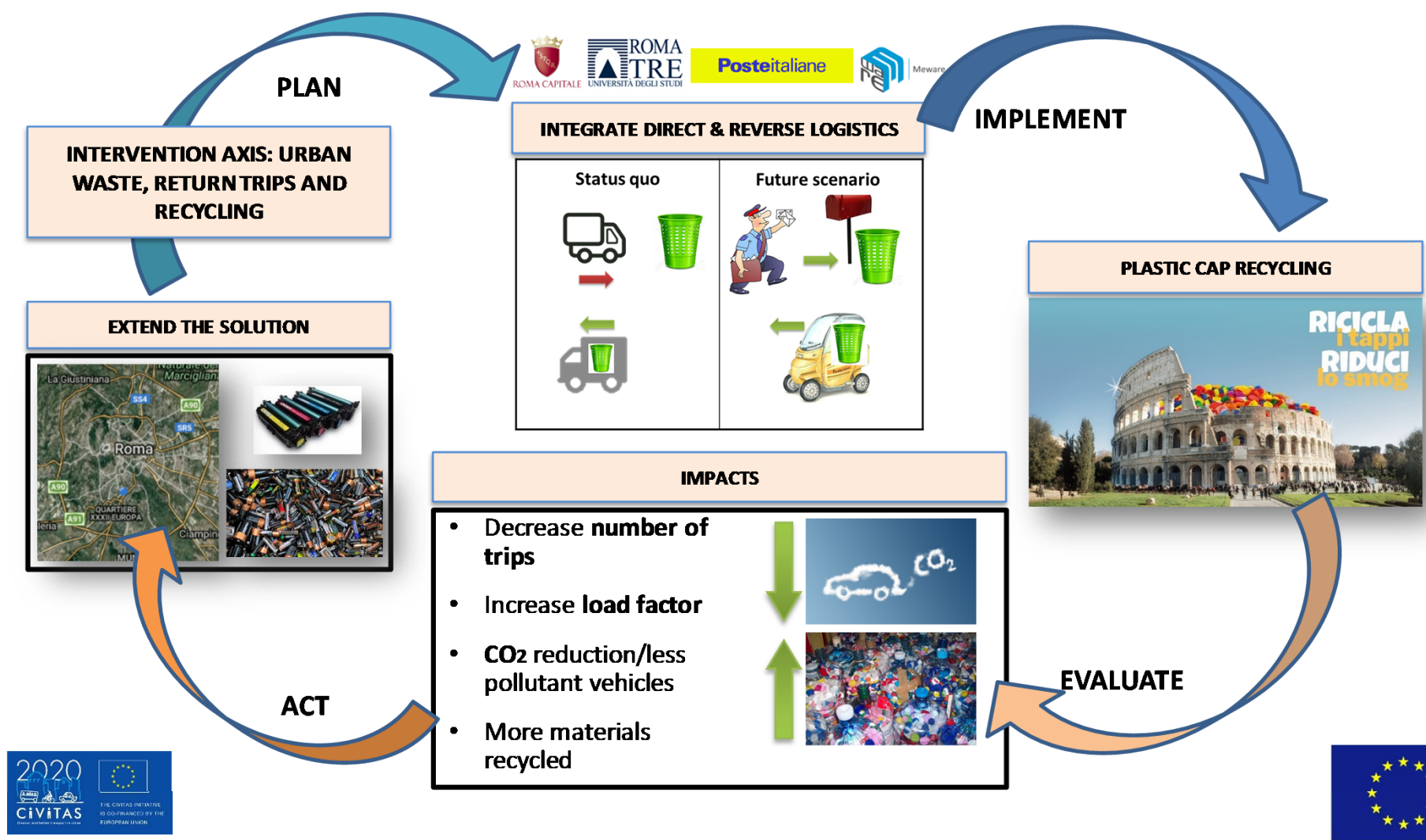
# Southampton – public procurement and consolidation

toi





# Rome: Combining direct and reverse flows



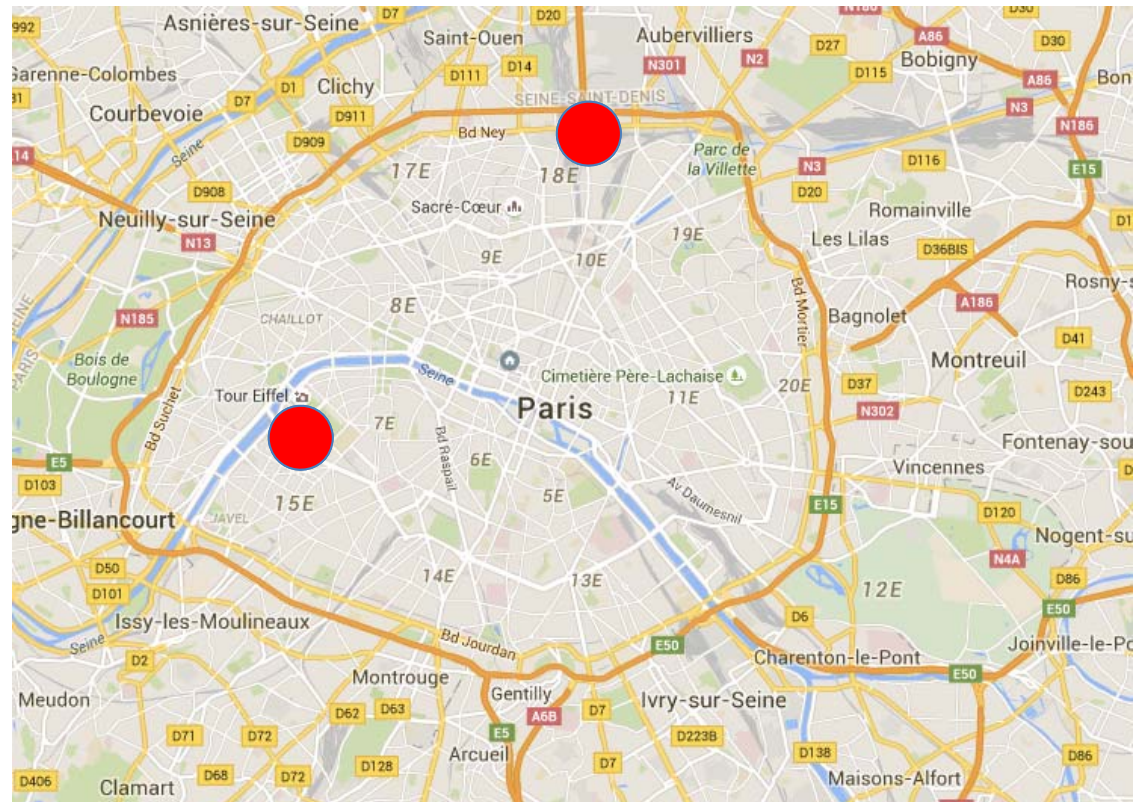


## Paris: Logistics hotels

**Chapelle International:** 35,000m<sup>2</sup> in the North of Paris,  
in construction

**Beaugrenelle:** 3000m<sup>2</sup> in the South West of Paris: in  
operation

**Sogaris** is the  
investor/manager  
(Private company  
owned by city of  
Paris)





## Outcomes

Increased load consolidation

Improved space and time use

Increased uptake of clean vehicles

Improved delivery efficiency and reliability

Reduced total distance driven

Reduced emissions and costs

Collaboration practices

Supporting policies

Scaling and replication

CO<sub>2</sub>-free city logistics



Thank you!

Jardar Andersen

Tel: +47 997 00 804

E-mail: [jan@toi.no](mailto:jan@toi.no)

This project has received funding from the European Union's Horizon 2020 research and innovation programme under grant agreement No 635898.

[www.citylab-project.eu](http://www.citylab-project.eu)



635898 CITYLAB

13

